

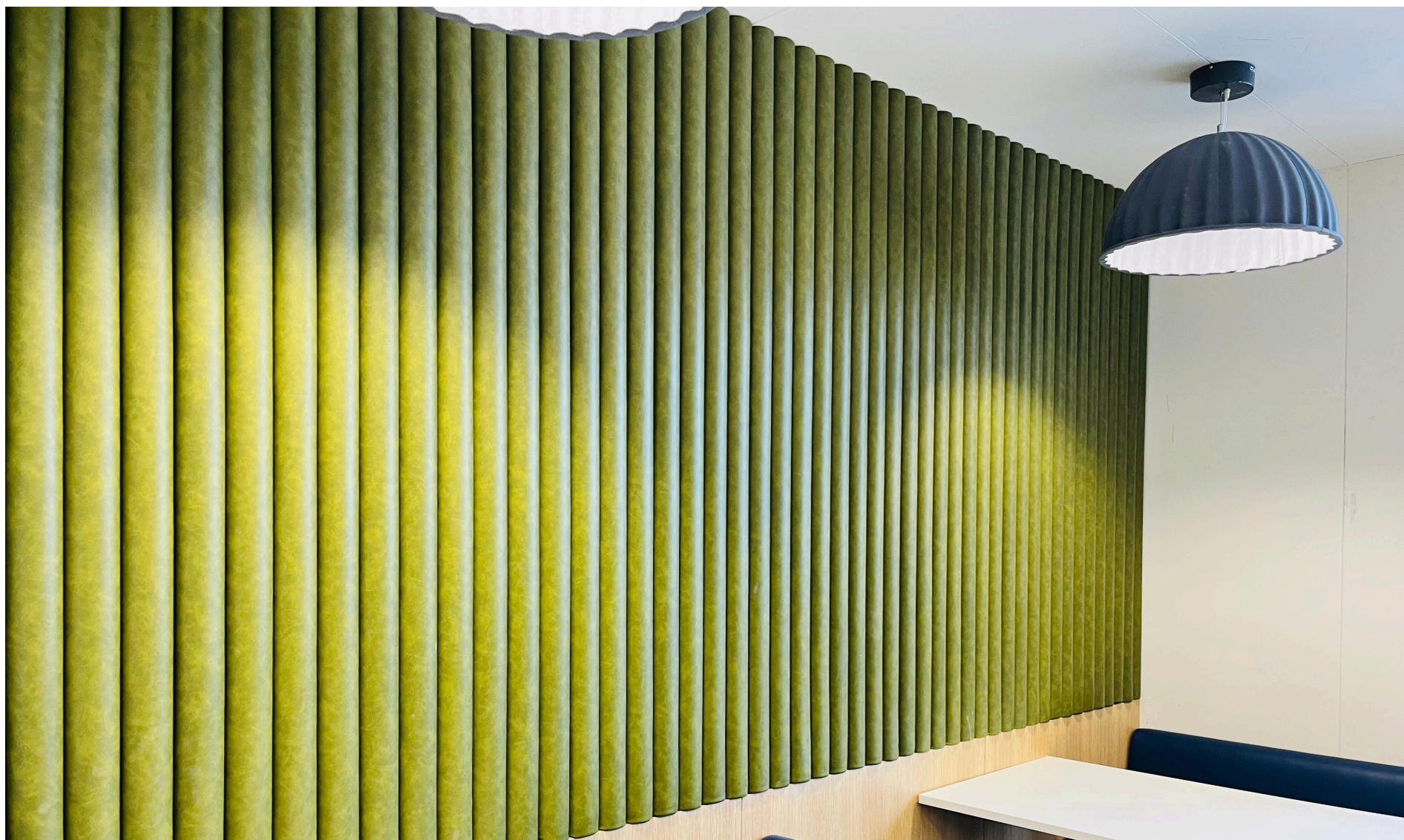


DXC wanted a workplace that felt alive. The office was redesigned around shared energy. Central hubs became natural meeting points, circulation paths turned interactive, and small pockets of privacy grew into flexible neighborhoods. Our acoustic layers supported this shift. Cara brought calm to active zones, Plush Arc Stick shaped focus areas, and soft felt elements helped every corner sound as good as it looked.

**Architects**  
RC Architecture

**City**  
Hyderabad

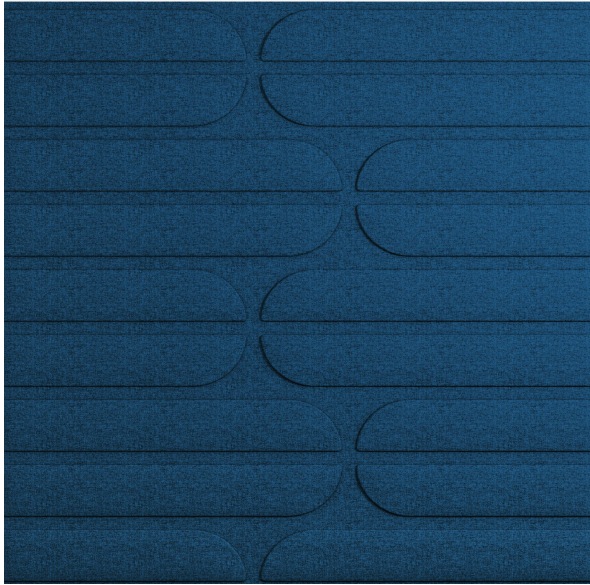
**Completion**  
2025



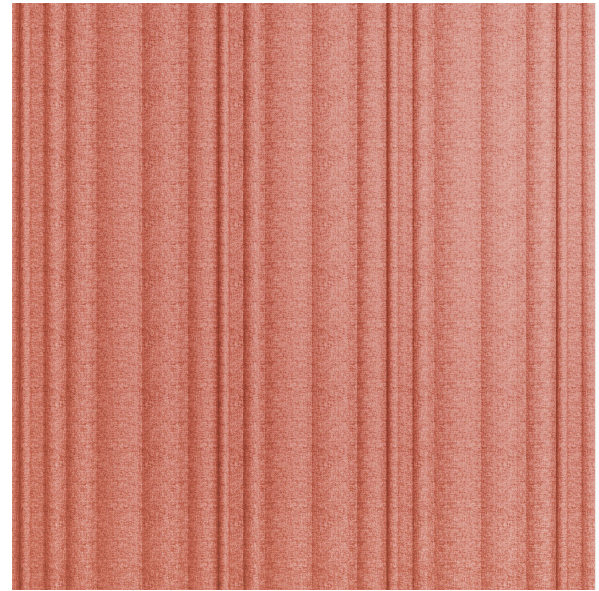




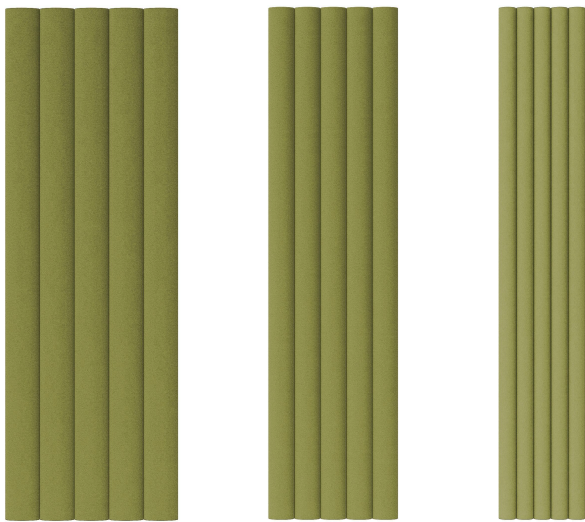
# Products Used



Cara (Lagom)



Cara (Meraki)



Plush (Arc stick)